



Lilly Nature Center

The Lilly Nature Center at the Celery Bog Nature Area adds opportunities for exhibits and educational activities. Programs are offered throughout the year.

Variety of Wildlife

The Celery Bog Nature Area is home to a variety of wildlife, particularly in the Spring and the Fall when migrating birds rest in the marsh. Bird families most likely to be found here include herons, egrets, coots, ducks, geese, hawks, woodpeckers, bluebirds, sparrows, and warblers.

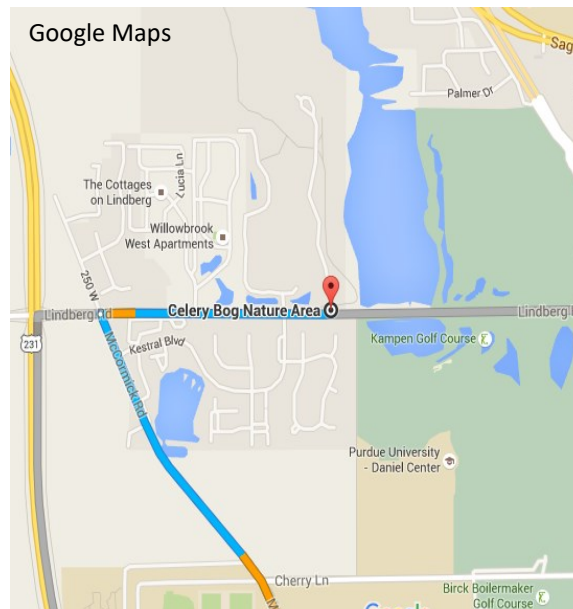


Hours of Operation

Monday - Tuesday: Closed

Wednesday- Saturday: 10 a.m. - 5 p.m.

Sunday: 1 p.m.. - 5 p.m.



Contact Information

Phone: (765) 775-5172

Email:

kgebhart@westlafayette.in.gov



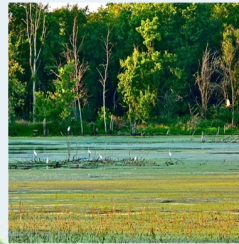
The Celery Bog Nature Area



1620 Lindberg Road
West Lafayette, IN 47906



Ecosystems of The Celery Bog Nature Area



Marsh



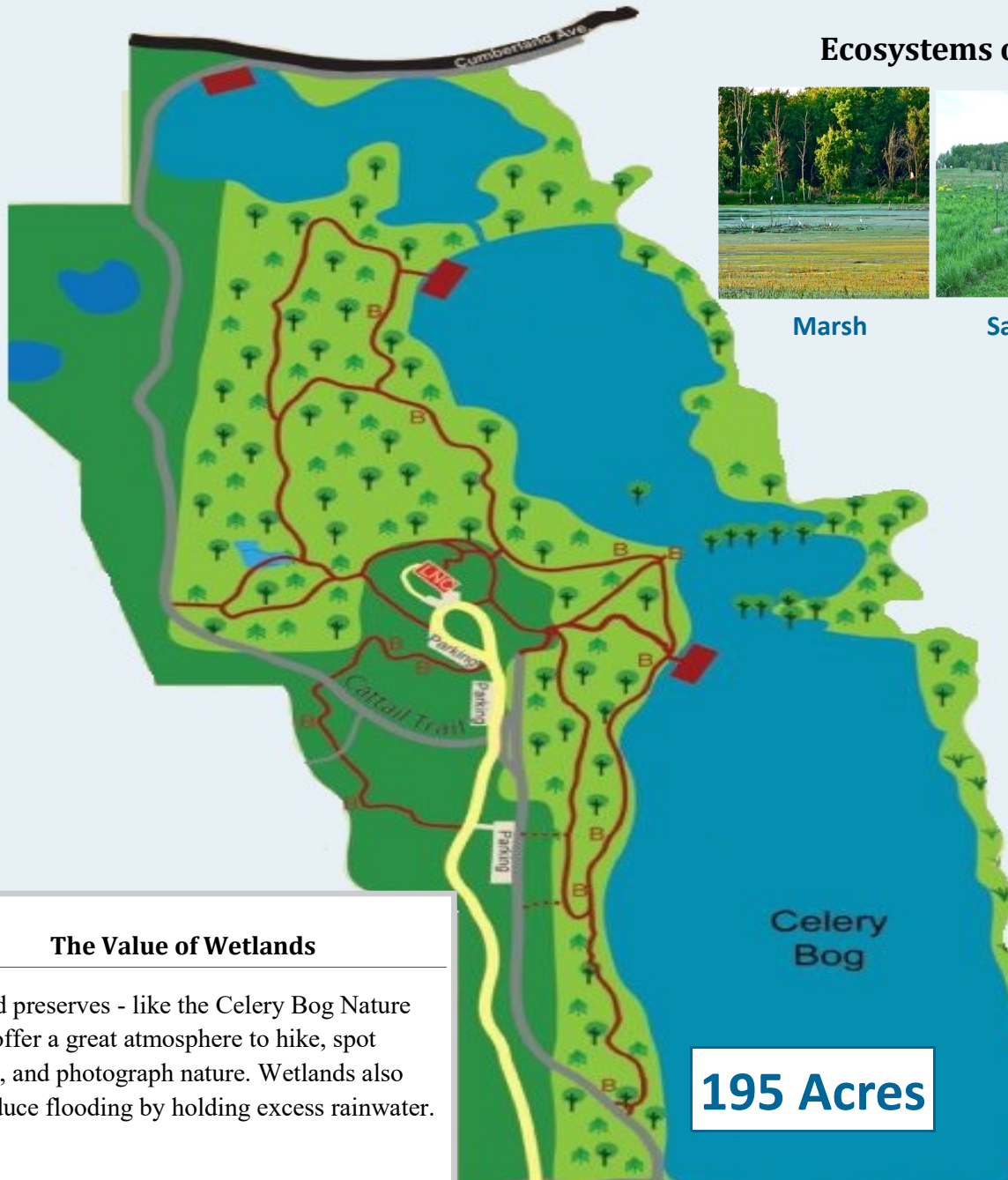
Savanna



Prairie



Forested Wetland



The Value of Wetlands

Wetland preserves - like the Celery Bog Nature Area - offer a great atmosphere to hike, spot wildlife, and photograph nature. Wetlands also help reduce flooding by holding excess rainwater.

How The Celery Bog Nature Area Got Its Name

For much of the twentieth century, the Celery Bog Nature Area was a large vegetable farm which supplied fresh produce to more than 80 grocers in the region. It's easy to guess that celery was one of the major crops. Onions, carrots, tomatoes, potatoes, green beans, peas, and cabbage thrived there as well. Immigrants from northern Holland farmed the Celery Bog Nature Area, using experience with similar soil in their native land. They tilled many acres, all by hand - watering with sprinkler cans when necessary. On hot days, the peat-rich soil smoldered. One year, the planting beds caught fire, burning for weeks. Drainage tiles and other scant traces of these pioneering farmers can still be found in The Celery Bog Nature Area. The marsh contains five wetland basins covering 100 acres. It is listed by DNR's Indiana Natural Heritage Program as one of the "significant sites" in the state.

195 Acres