



WEST LAFAYETTE HISTORIC PRESERVATION COMMISSION

222 N. Chauncey Avenue, Room 102 • West Lafayette, IN 47906 • 765-775-5160

APPLICATION FOR CERTIFICATE OF APPROPRIATENESS (COA)

(Please PRINT CLEARLY or TYPE)

OFFICE USE ONLY*****DO NOT COMPLETE ANY ENTRIES CONTAINED IN THIS BOX*****OFFICE USE ONLY

Date of Decision: _____

Date Approved COA Expires: 4/9/20

Local Historic District New Chauncey

Year of Construction 1910

Classification (National Register Report):

Contributing

Non-Contributing

Not Listed

Classification (Interim Report):

Outstanding

Notable

Contributing

Non-Contributing

Not Listed

☒ Approved ☐ Approved with Amendments ☐ Denied ☐ Tabled ☐ Withdrawn by Owner ☐ Admin. Approval

Approved by: _____

Date: 4/9/19

ADDRESS OF PROJECT: 443-445 Vine St

Brief description of proposed work: (Please PRINT CLEARLY or TYPE)

If necessary for description, please attach additional sheet.

The existing structure will be saved and repaired as necessary. Overall height and proportions facing Vine Street will remain unchanged.

Complete rehab of the existing duplex. The front and side exteriors will be refurbished to maintain the original view of the property.

The back of the structure will be pushed out to add two additional 3 bedroom units creating a fourplex. The rear view of the building will incorporate design features as the rehabilitated front facing Vine St. The existing garage on the back of the lot needs to be removed as it is structurally compromised and will be replaced with a new parking structure. Diagrams are being presented with this submission for review and further discussion.

What are the approximate start and finish dates of the proposed work?

Start 06/2019 Completion 06/2020

APPLICANT

Name: Morris Rentals LLC

Mailing Address: 419 Vine St., West Lafayette, IN 47906

Phone: _____

E-Mail: _____

APPLICANT relationship to property:

☒ Owner ☐ Contractor ☐ Architect ☐ Realtor ☐ Agent ☐ Other: _____

CONTACT PERSON: Ryan Justak

Phone: _____

E-Mail: _____

Relationship to applicant: Architect

Documentation to be submitted with applications: (Submit electronically to hpc@wl.in.gov or bring a hard copy to 222 N. Chauncey Ave, Room 102)


Please submit any of the below applicable materials with your application. Note that detailed drawings, plans or specifications are not required. However, to the extent reasonably required for the commission to make a decision, each application must be accompanied by sketches, photographs, descriptions or other information showing the proposed exterior alterations, additions, changes, or new construction.

- ☐ Photos of building exterior
 - o Photos should show the location of the project as seen from the public right-of-way
 - o Photos should be marked to demonstrate what windows and/or doors will be affected (if applicable)
 - o Photos should demonstrate the type and extent of deterioration (if applicable)
- ☒ Signed application
- ☐ Details specifying all permanent materials to be used (including specifications)
- ☐ Written description of proposed project
- ☐ Proposed plan, elevation and section drawings, including dimensions (if applicable)
- ☐ Please note whether or not the proposed project removes any materials that are original to the building

PLEASE NOTE: If the COA is approved, any changes or amendments to the approved COA will require additional review by city staff or the Historic Preservation Commission. An approved COA is valid for 12 months from the date of approval of the COA. After 12 months COA application must be resubmitted and reapproved by the HPC or Staff to continue the project.

REQUIRED SIGNATURE: The undersigned certifies that the statements set forth in this application including all drawings and specifications submitted herewith are true and correct, and agrees that the proposed improvements described in this application will be constructed in all respects in accordance with the approved COA as specified in the application, drawings and specifications submitted herewith. The undersigned further agrees to abide by any amendments approved to be part of this project by the West Lafayette Historic Preservation Commission or Staff.

Applicant (Print clearly or type): Kenneth Compere

Signature of Applicant:  Date: 1/24/2019

Owner (Print clearly or type): Morris Rentals LLC

Signature of Owner (if different): _____ Date: _____



Existing Vine Street Elevation

- SIDING:** vinyl + brick porch and foundation wall
color: white siding + red brick
- TRIM & SOFFIT:** vinyl
color: white
- ROOFING:** architectural asphalt shingles
color: brown
- GUTTERS:** aluminum
color: white
- DOORS:** steel with aluminum screen door (3'-0" x 6'-8")
color: (painted) white
- WINDOWS:** wood with aluminum storm windows
dimensions: 1st floor 46" x 77.5", 2nd floor 46" x 73", 3rd floor 30" x 33"
color: (painted) white



Proposed Vine Street Elevation

- SIDING:** LP Building Solutions – Lap Siding (Cedar Texture) + existing brick to be patched/repaired
color: (painted) Sherwin Williams SW 7615 Sea Serpent + existing brick unfinished
- TRIM & SOFFIT:** LP Building Solutions – Trim & Fascia + Soffit (Cedar Texture)
color: (painted) Sherwin Williams SW 7006 Extra White
- ROOFING:** GAF – Timberline HD Architectural Roofing Shingles
Pewter Gray
- GUTTERS:** aluminum
color: white
- DOORS:** Jeld Wen Steel Exterior Door CT-60 6-Pnl (size to match existing / 3'-0" x 6'-8")
color: (painted) Sherwin Williams SW 7593 Rustic Red
- WINDOWS:** Jeld Wen Clad-Wood (W-2500) Single-Hung
dimensions: to match existing (see page 1)
color: white (exterior)



Steel Exterior Door Contours All Panel

Product Detail Sheets

Table of Contents

Construction Details	3 – 5
Standard Non-Fire Door	pg. 3
20 Minute Fire Door	pg. 4
45, 60 & 90 Minute Fire Door	pg. 5
All-Panel Standard Doors	6 – 15



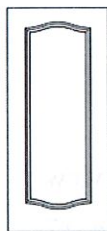
CC-30 3-Pnl Craftsman

2'-6" x 6'-8"pg. 6

2'-8" x 6'-8"

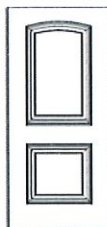
2'-10" x 6'-8"

3'-0" x 6'-8"



CT-11 1-Pnl

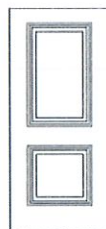
3'-0" x 6'-8"pg. 7



CT-20 2-Pnl Arch Top

2'-8" x 6'-8"pg. 8

3'-0" x 6'-8"



CT-21 2-Pnl Sq Top

2'-8" x 6'-8"pg. 9

3'-0" x 6'-8"

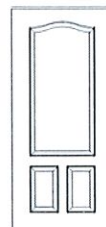


CT-24 2-Pnl V-Groove

Arch Top

2'-8" x 6'-8"pg. 10

3'-0" x 6'-8"



CT-30 3-Pnl

2'-8" x 6'-8"pg. 11

3'-0" x 6'-8"



Steel Exterior Door Contours All Panel



CT-40BT 4-Pnl

Blank Top

2'-8" x 6'-8"pg. 12

3'-0" x 6'-8"



CT-80 8-Pnl Center

Arch Top

2'-8" x 6'-8"pg. 14

3'-0" x 6'-8"



CT-60 6-Pnl

2'-6" x 6'-8"pg. 13

2'-8" x 6'-8"

3'-0" x 6'-8"



CT-90 9-Pnl

2'-8" x 6'-8"pg. 15

3'-0" x 6'-8"

Sidelight Designs 16 - 17



CT-422 1-Pnl with $\frac{3}{4}$ view

1'-0" x 6'-8"pg. 16

1'-2" x 6'-8"



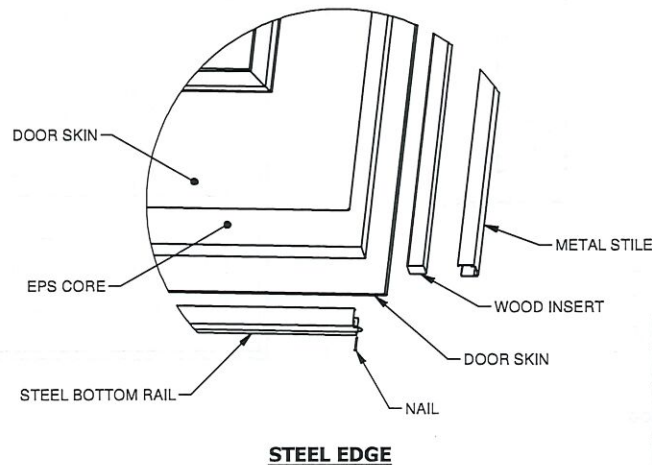
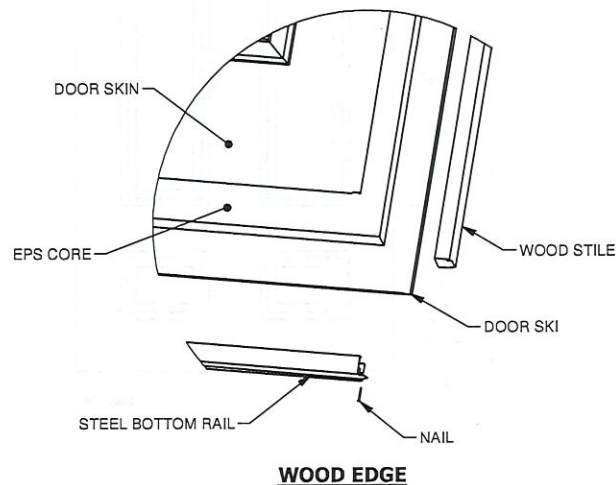
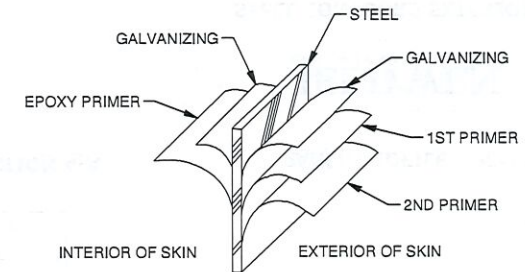
CT-692 1-Pnl with $\frac{1}{2}$ view

1'-0" x 6'-8"pg. 17

1'-2" x 6'-8"

© 2012 JELD-WEN, Inc. ALL RIGHTS RESERVED.
NO DUPLICATION OR DISTRIBUTION PERMITTED.
JELD-WEN, Inc. CONFIDENTIAL AND PROPRIETARY.

	EDGE	SKIN	STICKING	LOCK BLOCK	CORE	STILES / TOP RAIL
CONTOURS™	WOOD (STD)	BRIGHT WHITE PRIMED GALVANIZED STEEL	BEADED	12" (STD) 18" (OPTIONAL) WOOD or EPS	EXPANDED POLYSTYRENE	1" LVL (STD)
	STEEL (OPTIONAL)	BRIGHT WHITE PRIMED GALVANIZED STEEL	BEADED	12" (STD) 18" (OPTIONAL) WOOD or EPS	EXPANDED POLYSTYRENE	1 7/32" METAL STILE (STD)
ENERGY SAVER®	WOOD (STD)	BRIGHT WHITE PRIMED GALVANIZED STEEL	OVCLO	12" (STD) 18" (OPTIONAL) WOOD or EPS	EXPANDED POLYSTYRENE	1" LVL (STD)
	STEEL (OPTIONAL)	BRIGHT WHITE PRIMED GALVANIZED STEEL	OVCLO	12" (STD) 18" (OPTIONAL) WOOD or EPS	EXPANDED POLYSTYRENE	1 7/32" METAL STILE (STD)
GLADIATOR®	WOOD (STD)	CREAM COLOR PRIMED GALVANIZED STEEL	OVCLO	12" FOAM (STD) WOOD (OPTIONAL)	EXPANDED POLYSTYRENE	1" LVL (STD)
FINISHIELD®	WOOD (STD)	PRIMED GALVANIZED STEEL with 7-MIL OAK WOODGRAIN WHITE TEXTURED VINYL	OVCLO	12" FOAM (STD) WOOD (OPTIONAL)	EXPANDED POLYSTYRENE	1" LVL (STD)



CREATION DATE: 2/6/2012	JELD-WEN WINDOWS & DOORS	3737 Lakeport Blvd. Klamath Falls, OR 97601 Phone: (800) 441-3884 www.jeld-wen.com
REV. DATE: NULL		
TITLE: STEEL DOOR CONSTRUCTION DETAILS		
DESCRIPTION: STANDARD NON-FIRE DOOR OPTIONS		

JELD-WEN Inc. RESERVES THE RIGHT TO CHANGE SPECIFICATIONS WITHOUT NOTICE. DIMENSIONS MAY VARY BY DESIGN OR MANUFACTURING FACILITY. PLEASE CONTACT YOUR LOCAL JELD-WEN FACILITY FOR DIMENSIONAL CLARIFICATIONS OR FOR OPTIONAL COMPONENTS.

JELD-WEN Inc. RESERVES THE RIGHT TO CHANGE SPECIFICATIONS WITHOUT NOTICE. DIMENSIONS MAY VARY BY DESIGN OR MANUFACTURING FACILITY, PLEASE CONTACT YOUR LOCAL JELD-WEN FACILITY FOR DIMENSIONAL CLARIFICATIONS OR FOR OPTIONAL COMPONENTS.



AuraLast® Wood protects against wood rot for as long as you own and occupy your home. Guaranteed.



Guaranteed Protection Against Wood Rot

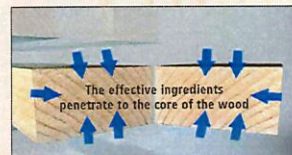
JELD-WEN® wood windows and patio doors made with exclusive pine AuraLast Wood are guaranteed not to rot for as long as you own and occupy your home. Wood components made from AuraLast Wood maintain their structural integrity even in the toughest climates. Visit jeld-wen.com to view the full warranty.*



Surface-to-Core Protection
Because of our vacuum/pressure process, AuraLast Wood provides virtually 100% penetration of the protective ingredients. Other manufacturers use submersion/dip-treatment methods, which only protect the outer surface of the wood.



Working With AuraLast Wood is Easy
AuraLast offers the strength and beauty of real wood because it is real wood, not a composite. AuraLast Wood is colorless, stainable and odorless.



Virtually 100% Surface-to-Core Protection

JELD-WEN products made from pine AuraLast Wood will not rot.

100% AuraLast is Safe

WORKSAFE
AuraLast Wood is made by using a water-based solution to deliver the effective ingredients to the core of the wood. Traditional dip-treatments use a solvent-based chemical bath. During production, our AuraLast process releases 96% fewer volatile organic compounds than the traditional dip-treatment method.



Traditional treatments only protect the outer surface

A JELD-WEN Exclusive

Only JELD-WEN makes window and door products with natural pine AuraLast Wood that are built to last.

Protects Against Water Saturation

AuraLast Wood offers superior resistance to water saturation, which protects against swelling that causes windows and doors to stick.

Protects Against Termites

Harmful termites will eat through unprotected wood—not so with AuraLast Wood.

Visit jeld-wen.com/auralast for more information

*AuraLast Lifetime Limited Warranty Coverage for Wood Decay and Termite Damage

The JELD-WEN® website is your ultimate resource for learning about our reliable windows and doors. It has all the product information and design advice you need. Visit us at jeld-wen.com today.

JELD-WEN
WINDOWS & DOORS

THE JELD-WEN PROMISE

JELD-WEN products create lasting value for your home. We are so confident that you will be pleased with our W-2500 Clad-Wood Windows, that each one carries our industry-leading warranty. Here are just some of the highlights of our warranty...

The Window & Patio Door Limited Warranty Includes:

- Lifetime limited warranty on AuraLast® Wood, protects against wood rot for as long as you own and occupy your home
- 20-year coverage against defects in material and workmanship for most product components (such as insulating glass, metal and wood components, and hardware)
- 20-year coverage on Kynar® clad finish. 10-year coverage on polyester clad finishes
- Skilled labor coverage for warranty repairs for 2 years
- Coverage is transferable for 10 years

NOTE: The above information is a summary of key provisions of the JELD-WEN Window & Patio Door Limited Warranty effective February 1, 2004. For a complete copy of the current warranty, see your sales associate or refer to www.jeld-wen.com



© 2014, 2013 JELD-WEN, Inc. This publication and its contents are owned by JELD-WEN, Inc. and are protected under the U.S. Copyright Act and other intellectual property laws. All trademarks, service marks, logos and the like (whether registered or unregistered) are owned or controlled by JELD-WEN, Inc. or others. Unauthorized use or duplication is prohibited.

JELD-WEN reserves the right to change product specifications without notice. Please check our website, jeld-wen.com, for current information. 11-91099 03/14 (HPS 05/14 13M)

JELD-WEN
WINDOWS & DOORS

W-2500 Clad-Wood Window Features

Awning | Casement | Double-Hung | Fixed, Radius and Geometric



STYLES, LITES, COLORS & GLASS

Window Styles



Standard Prefinished Interiors*

1. Primed
2. Brilliant White
3. Ivory
4. Desert Sand
5. Clear Lacquer
6. Wheat
7. Cider
8. Fruitwood
9. Cranberry
10. Walnut

* Colors shown may vary from final finish



FSC® certified or PEFC® certified wood available. See your JELD-WEN dealer for details.



Divided Lites



Grilles Between the Lites (GBL)



Full-Frame (FF) and Knock-Out (KO) Removable Wood Grilles



Simulated Divided Lites (SDL)

Clad Colors*



* Colors shown may vary from actual color

Decorative Glass Options

Tinted Glass

Reduces glare and is ideal for areas that get a lot of direct sunlight in the summer.



Low-E



LoE-366

Textured Glass

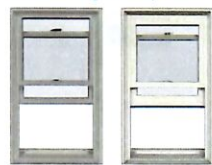
Lets light in while maintaining privacy.



Obscure

HARDWARE & SCREEN OPTIONS

Double-Hung Sash Options



Standard Sash Option Traditional Sash Option

Window Hardware



Painted Finishes



Plated Finishes



Double-Hung Jamb Liner Options



Without Optional Jamb Liner Edge Cover



With Optional Jamb Liner Edge Cover

Screen Options*

These screens are designed to keep insects outside, while letting more natural light inside. They feature fine, black fiberglass mesh with a light gloss finish. BetterVue® insect screens are standard for awning, casement and double-hung windows.

Regular Screen BetterVue® Screen UltraVue® Screen



View through regular fiberglass insect screen

View through BetterVue insect screen (standard)

View through optional UltraVue insect screen

* These images are for illustration purposes only. Insect screens are intended to allow air and light in, while keeping insects out. They are not intended to stop children from falling through an open door or window. For safety screens and other security screens, contact your local building supply retailer.

PERFORMANCE GLASS OPTIONS

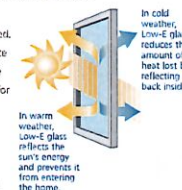
Low-E, LoE³-366 and Low-E EC Insulating Glass

High-performance Low-E insulating glass comes standard to help lower energy costs, allows homes to stay cooler in the summer and warmer in the winter, prevents fading of interior furnishings, and reduces condensation. It also delivers greater visible light transmittance than tinted glass. We also offer optional LoE-366, which provides even more protection against heat loss and fading, as well as greater energy savings.

Most windows and patio doors with Low-E glass are ENERGY STAR® qualified. ENERGY STAR products help Americans save energy, save money, and reduce their carbon footprints. ENERGY STAR criteria for windows are based on the U-factor and SHGC combinations that provide significant energy efficiency for a given climate zone. Just tell your JELD-WEN® dealer you want JELD-WEN windows that are ENERGY STAR qualified for your climate zone.

For even more protection, choose Low-E EC for an "extra coating" that improves the thermal performance of our windows and is the optimal solution for meeting ENERGY STAR criteria in certain regions of the country.

For more information, visit www.jeld-wen.com/energyefficiency.



ENERGY STAR®

The W-2500 line meets ENERGY STAR criteria in all four climate zones in the United States. ENERGY STAR criteria are achieved in North, North Central, and South Central climate zones with the standard glass package of LoE-270 with argon, and in the Southern zone when grilles are used. Without grilles, Southern zone ENERGY STAR criteria are achieved with LoE-366 and argon.

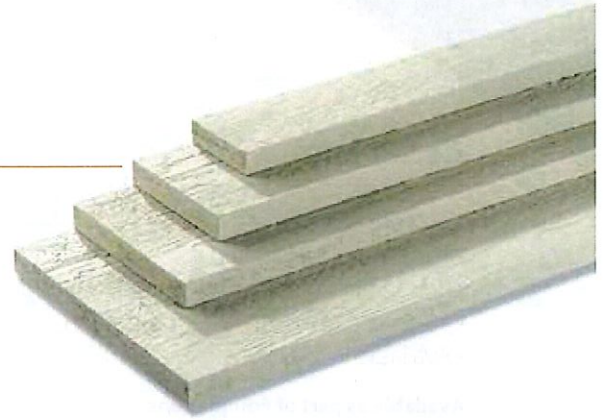
Tax Credits, Rebates and Incentives

The JELD-WEN website is a great source of information for Tax Credits, Rebates and Incentives on energy efficient products. Visit www.jeld-wen.com for more information. Because the windows in our W-2500 window line are so energy efficient, replacing old windows can mean money in your pocket.

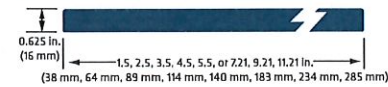


Cedar

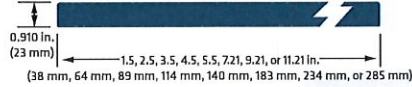
- Interior or exterior use, including corner boards, windows and doors
- Narrow widths save cutting time with no ripped edges to re-prime
- Pre-primed for exceptional paint adhesion
- 16' length results in faster installation
- Available in strand substrate



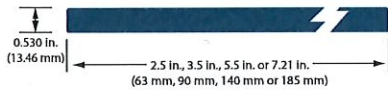
LP SmartSide 440 Series Trim



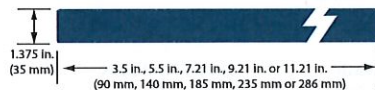
LP SmartSide 540 Series Trim



LP SmartSide 190 Series Trim

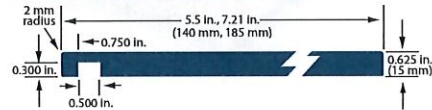


LP SmartSide 2000 Series Trim



Texture	Length	Actual Width	Actual Thickness
Cedar	16 ft. (192 in.)(4877 mm)	1.5 in. (38 mm)	0.625 in. (16 mm) or 0.910 in.(23 mm)
	16 ft. (192 in.)(4877 mm)	2.5 in. (64 mm)	0.530 in. (13 mm), 0.625 in. (16 mm) or 0.910 in.(23 mm)
	16 ft. (192 in.)(4877 mm)	3.5 in. (89 mm)	0.530 in. (13 mm), 0.625 in. (16 mm), 0.910 in.(23 mm)
	16 ft. (192 in.)(4877 mm)	4.5 in. (114 mm)	0.910 in.(23 mm)
	16 ft. (192 in.)(4877 mm)	5.5 in. (140 mm)	0.530 in. (13 mm), 0.625 in. (16 mm), 0.910 in.(23 mm)
	16 ft. (192 in.)(4877 mm)	7.21 in. (183 mm)	0.625 in. (16 mm), 0.910 in.(23 mm)
	16 ft. (192 in.)(4877 mm)	9.21 in. (234 mm)	0.625 in. (16 mm), 0.910 in.(23 mm)
	16 ft. (192 in.)(4877 mm)	11.21 in.(285 mm)	0.625 in. (16 mm), 0.910 in.(23 mm)

LP SmartSide 440 Series Fascia



Texture	Length	Actual Width	Actual Thickness
Cedar-Ploughed Fascia	16 ft. (192 in.) (4877 mm)	5.5 in. (140 mm)	0.625 in. (16 mm)
Cedar-Ploughed Fascia	16 ft. (192 in.) (4877 mm)	7.21 in. (183 mm)	0.625 in. (16 mm)

Metric units are rounded to the nearest millimeter. *Special order items require minimum quantity and extended lead times.



Cedar Lap

Durable Beauty

- The natural look of cedar
- Pre-primed for exceptional paint adhesion
- 16' length results in faster installation
- Available in fiber substrate

Available as part of Foundations

LP® Smartside® 76 series Cedar Lap Siding



Texture	Length	Actual Width	Actual Thickness
Cedar	16 ft. (192 in.)(4877 mm)	5.84 in. (148 mm)	0.375 in. (10 mm)
	16 ft. (192 in.)(4877 mm)	7.84 in. (199 mm)	0.375 in. (10 mm)
	16 ft. (192 in.)(4877 mm)	9.47 in. (241 mm)	0.375 in. (10 mm)
	16 ft. (192 in.)(4877 mm)	11.84 in. (301 mm)	0.375 in. (10 mm)



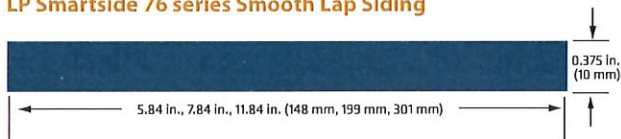
Smooth Lap

Understated Elegance

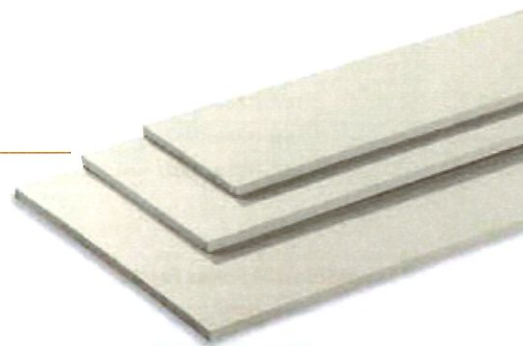
- Traditional look that accentuates the architectural features of any home
- Smooth texture for a clean finish
- Pre-primed for exceptional paint adhesion
- 16' length results in faster installation
- Available in fiber substrate

Available as part of Foundations

LP Smartside 76 series Smooth Lap Siding



Texture	Length	Actual Width	Actual Thickness
Smooth	16 ft. (192 in.)(4877 mm)	5.84 in. (148 mm)	0.375 in. (10 mm)
	16 ft. (192 in.)(4877 mm)	7.84 in. (199 mm)	0.375 in. (10 mm)
	16 ft. (192 in.)(4877 mm)	11.84 in. (301 mm)	0.375 in. (10 mm)





LP SmartSide Soffit Specifications

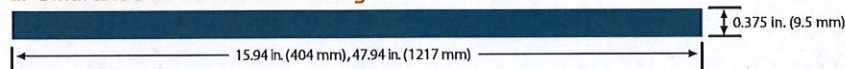
Soffit

The Perfect Match

- Installs quickly and easily
- Available in multiple sizes for extraordinary versatility
- Pre-primed for exceptional paint adhesion
- Available in fiber substrate
- Cedar or smooth texture

Available as part of Foundations

LP SmartSide 76 Series Soffit Siding



Texture	Length	Actual Width	Actual Thickness
Cedar	8 ft. (96 in.)(2438 mm)	47.94 in. (1218 mm)	0.375 in. (9.5 mm)
	9 ft. (108 in.)(2743 mm)	47.94 in. (1218 mm)	0.375 in. (9.5 mm)
	16 ft. (192 in.)(4876 mm)	15.94 in. (404 mm)	0.375 in. (9.5 mm)
Smooth	8 ft. (96 in.)(2438 mm)	47.94 in. (1218 mm)	0.375 in. (9.5 mm)
	9 ft. (108 in.)(2743 mm)	47.94 in. (1218 mm)	0.375 in. (9.5 mm)



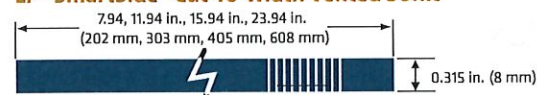
Vented Soffit

Engineered To Cut Out Problems

- The perfect alternative to MDO, plywood or hand-installed metal vents
- Precisely cut vents offer 10 square inches of ventilation per linear foot, making it easier to meet code requirements while adding architectural beauty
- Designed to minimize paint build-up and promote continuous airflow
- Vents are as small as International Building Codes allow (1/8"), to keep hornets and bees out
- Eliminates time spent ripping full sheets
- Available in strand substrate

Available as part of Architectural Collection

LP® SmartSide® Cut-To-Width Vented Soffit



Texture	Length	Actual Width	Actual Thickness
Cedar	16 ft. (192 in.)(4877 mm)	7.94 in. (202 mm)	0.315 in. (8 mm)
	16 ft. (192 in.)(4877 mm)	11.94 in. (303 mm)	0.315 in. (8 mm)
	16 ft. (192 in.)(4877 mm)	15.94 in. (405 mm)	0.315 in. (8 mm)
	16 ft. (192 in.)(4877 mm)	23.94 in. (608 mm)	0.315 in. (8 mm)

SPECIAL ORDER*



Metric units are rounded to the nearest millimeter. *Special order items require minimum quantity and extended lead times.

Timberline HD® Shingles

Made to protect your
home. Your story. And
those of over 50 million of
your fellow Americans!



TIMBERLINE HD

LIFETIME HIGH DEFINITION SHINGLES

Timberline HD® Shingles Provide These Unique Benefits:

Great Value

Architecturally stylish but
practically priced

Dimensional Look

Features GAF proprietary
color blends and enhanced
shadow effect for a genuine
wood-shake look

Highest Roofing Fire Rating

UL Class A, Listed to ANSI/UL 790

High Performance

Designed with Advanced Protection®
Shingle Technology, which reduces the
use of natural resources while providing
excellent protection for your home
(visit gaf.com/APS/ to learn more)

Stays in Place

Dura Grip™ Adhesive seals each
shingle tightly and reduces the risk of
shingle blow-off. Shingles warranted
to withstand winds up to 130 mph
(209 km/h)¹

StainGuard® Protection

Helps ensure the beauty of your roof
against unsightly blue-green algae²

Peace of Mind

Lifetime Ltd. transferable warranty with
Smart Choice® Protection (non-prorated
material and installation labor coverage)
for the first ten years³

Perfect Finishing Touch

For the best look, use Timbertex®
Premium Ridge Cap Shingles or
Ridglass® Premium Ridge Cap Shingles⁴

¹This wind speed coverage requires special installation; see *GAF Shingle & Accessory Ltd. Warranty* for details.

²StainGuard® Protection applies only to shingles with StainGuard®-labeled packaging. See *GAF Shingle & Accessory Ltd. Warranty* for complete coverage and restrictions.

³See *GAF Shingle & Accessory Ltd. Warranty* for complete coverage and restrictions. The word "Lifetime" refers to the length of coverage provided by the *GAF Shingle & Accessory Ltd. Warranty* and means as long as the original individual owner(s) of a single-family detached residence (or the second owner(s) in certain circumstances) owns the property where the shingles are installed. For owners/structures not meeting the above criteria, Lifetime coverage is not applicable.

⁴These products are not available in all areas. See www.gaf.com/ridgecapavailability for details.

Colors & Availability

Regional Availability

Northeast, Southeast, Southwest,
West, and Central Areas

Copper Canyon

Patriot Red

Driftwood

Pewter Gray

Fox Hollow Gray

Shakewood

Barkwood

Golden Amber

Slate

Birchwood

Hickory

Sunset Brick

Biscayne Blue

Hunter Green

Weathered Wood

Canadian Driftwood

sold in Canada only

Mission Brown

White

Charcoal

Oyster Gray

Williamsburg Slate

Applicable Standards & Protocols

- UL Listed to ANSI/UL 790 Class A
- Miami-Dade County Product Control approved
- State of Florida approved
- UL 997 modified to 110 mph
- Classified by UL in accordance with ICC-ES AC438
- Meets ASTM D7158, Class H
- Meets ASTM D3161, Class F
- Meets ASTM D3018, Type 1
- Meets ASTM D3462¹
- ICC-ES Evaluation Reports ESR-1475 and ESR-3267

- Texas Department of Insurance listed
- CSA A123.5²
- ENERGY STAR® Certified (White Only) (U.S. Only)
- Rated by the CRRC
- Can be used to comply with Title 24 cool roof requirements
- Meets the cool roof requirements of the Los Angeles Green Building Code (Birchwood, Copper Canyon, Golden Amber, and White Only)

Product/System Specifics³

- Fiberglass Asphalt Construction
- Dimensions (approx.): 13 1/4" x 39 3/8" (337 x 1,000 mm)

- Exposure: 5 5/8" (143 mm)
- Bundles/Square: 3
- Pieces/Square: 64
- StainGuard® Protection: Yes⁴
- Hip/Ridge: Timberline®; Seal-A-Ridge®; Z® Ridge; Ridglass®
- Starter: Pro-Start® & WeatherBlocker™

Installation

Detailed installation instructions are provided on the inside of each bundle wrapper of Timberline HD® Shingles. Installation instructions may also be obtained at gaf.com.

¹Periodically tested by independent and internal labs to ensure compliance with ASTM D3462 at time of manufacture.

²Refers to shingles sold in Canada only.

³Refer to complete published installation instructions.

⁴StainGuard® Protection applies only to shingles with StainGuard®-labeled packaging. See GAF Shingle & Accessory Ltd. Warranty for complete coverage and restrictions.

Note: It is difficult to reproduce the color clarity and actual color blends of these products. Before selecting your color, please ask to see several full-size shingles.

MORRIS RENTALS

443 Vine Street, West Lafayette, Indiana 47906

PROPOSED REMODEL AND ADDITION



PROPOSED ELEVATION/PERSPECTIVE - VINE STREET



PROPOSED ELEVATION/PERSPECTIVE - RUSK STREET



ARKOR

112 NORTH ST. STE 101 | 203.479.4020
LAFAYETTE, IN 47901 | WWW.ARKORINC.COM



MORRIS RENTALS
419 VINE STREET
WEST LAFAYETTE, INDIANA
(765) 743 4597

SEAL:
PRELIMINARY PLANS
NOT FOR CONSTRUCTION

EXPERIMENTAL: THESE PLANS WERE PREPARED BY A STUDENT OF THE ARCHITECTURAL PROGRAM OF THE UNIVERSITY OF INDIANA. THEY ARE NOT TO BE USED FOR ANY OTHER PURPOSES. THE ARCHITECT'S OFFICE ASSUMES NO LIABILITY FOR ANY ERRORS OR OMISSIONS.

MORRIS RENTALS
REMODEL & ADDITION
443 Vine Street
West Lafayette, Indiana 47906

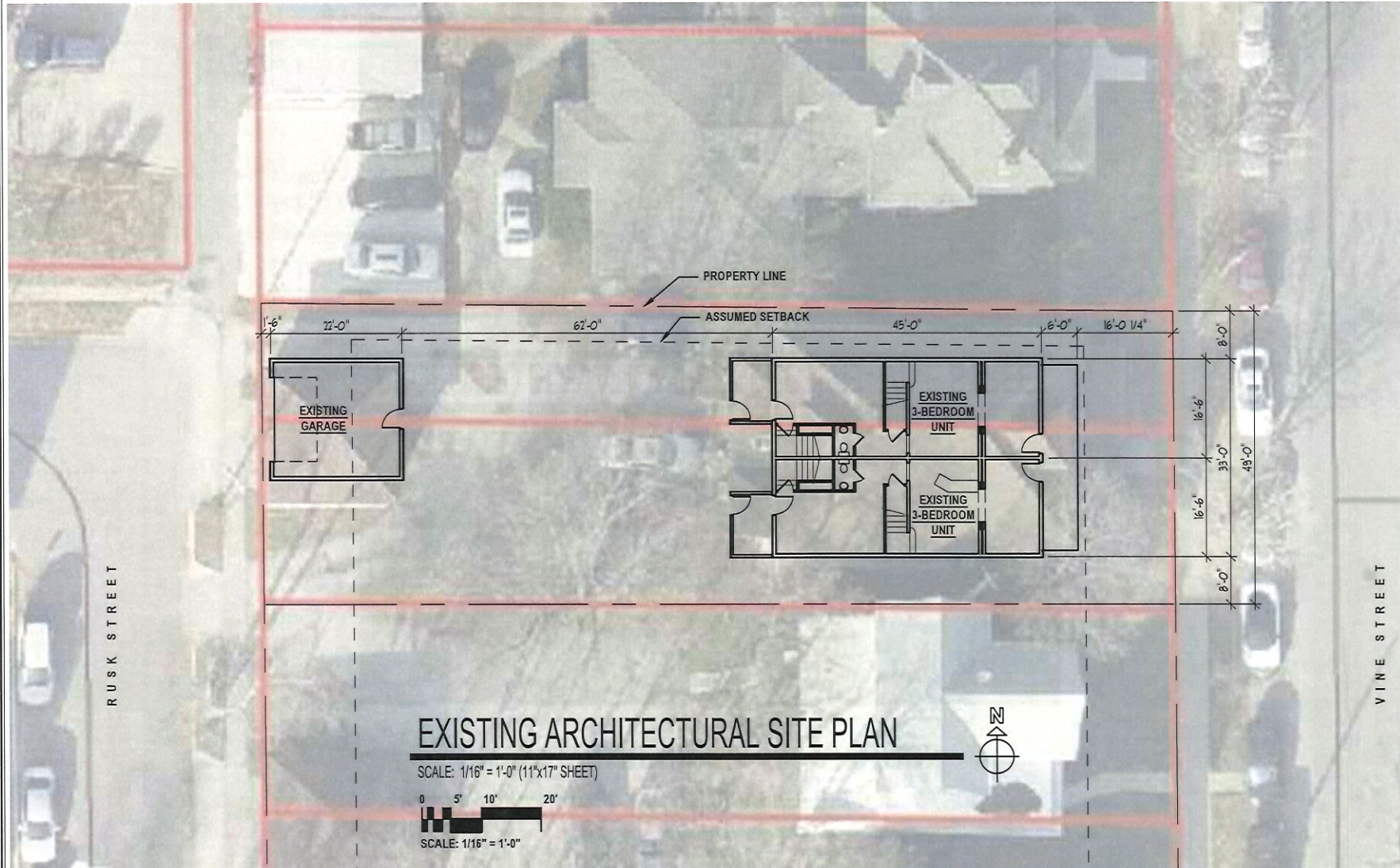
PROJECT:

DRAWN BY: OAZ CHIEF BY: RCJ
PLOT DATE: March 1, 2019

PROJ. NO.: C-18041

SHEET NAME:
TITLE

SHEET NUMBER:
TITLE



SEAL:

**PRELIMINARY PLANS
NOT FOR CONSTRUCTION**

CONTRACTOR: Review this (contract) within two (2) weeks of execution. If you do not agree to the terms of this contract, you must notify the architect within two (2) weeks of execution. If you do not agree to the terms of this contract, you must notify the architect within two (2) weeks of execution.

MORRIS RENTALS
REMODEL & ADDITION
443 Vine Street
West Lafayette, Indiana 47906

PROJECT

DRAWN BY: OAZ CHWD BY: RCJ

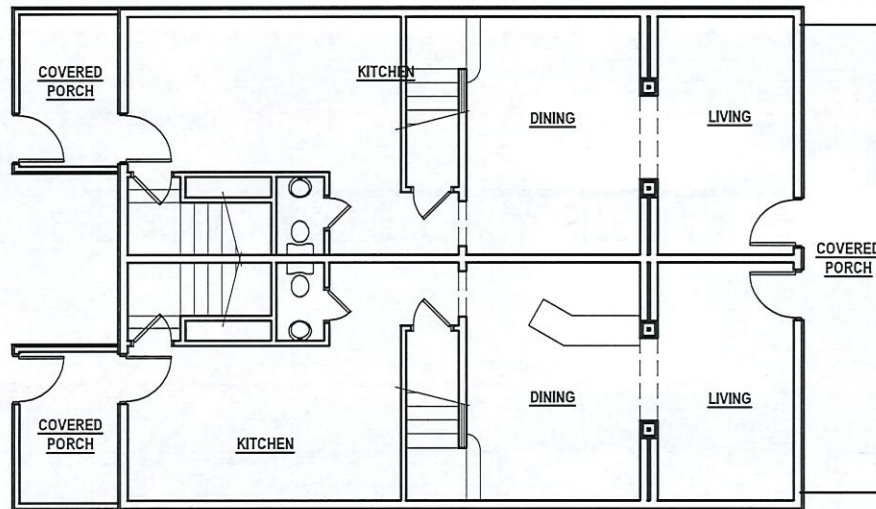
PLOT DATE: March 1, 2019

PROJ. NO.: C-18041

SHEET NAME:
**EXISTING
ARCHITECTURAL
SITE PLAN**

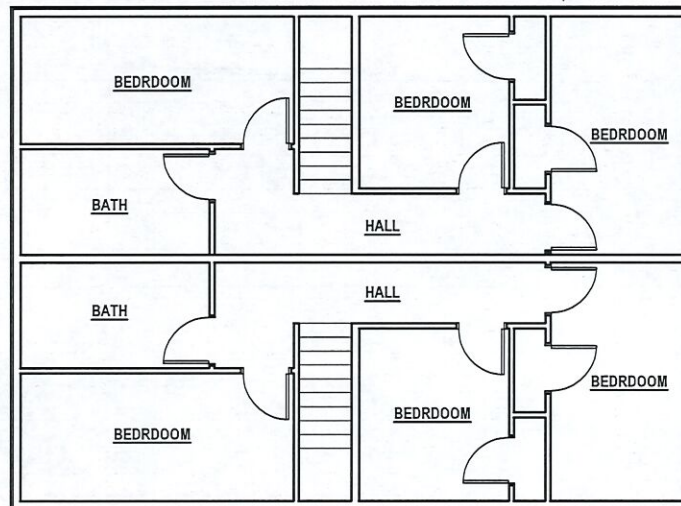
SHEET NUMBER:

A1



EXISTING FIRST FLOOR PLAN

SCALE: 1/8" = 1'-0" (11"x17" SHEET)



EXISTING SECOND FLOOR PLAN

SCALE: 1/8" = 1'-0" (11"x17" SHEET)



ARKOR

117 N. 4TH ST. STE 101 | LAFAYETTE, IN 47901 | 765.425.4378 | www.arkor.com



MORRIS RENTALS
419 VINE STREET
WEST LAFAYETTE, INDIANA
(765) 743 4597

SEAL:
**PRELIMINARY PLANS
NOT FOR CONSTRUCTION**

EXHIBIT: SUPPLEMENTAL STANDARD SPECIFICATIONS FOR THE PROJECT
AND/OR, ANY OTHER INFORMATION TO BE PROVIDED TO THE CLIENT
AND/OR, ANY OTHER INFORMATION TO BE PROVIDED TO THE CLIENT

MORRIS RENTALS
REMODEL & ADDITION
443 Vine Street
West Lafayette, Indiana 47906

PROJECT:

DRAWN BY: QAZ CHECKED BY: RCL

PLOT DATE: March 1, 2019

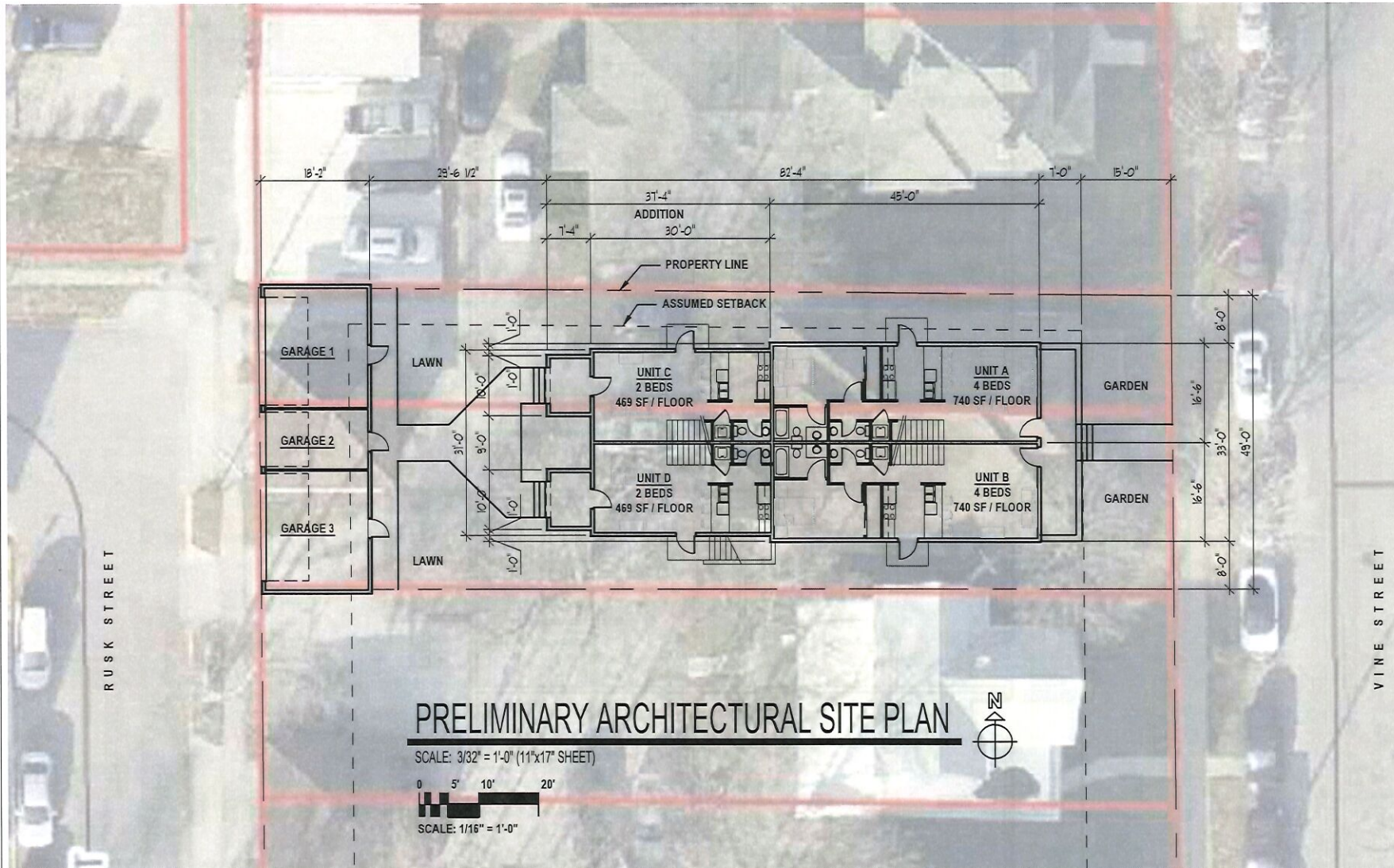
PROJ. NO.: C-18041

SHEET NAME:
**EXISTING
FLOOR PLAN**

SHEET NUMBER:

A2

FOUR (4) DWELLING UNITS
TWELVE (12) TOTAL BEDS



ARKOR

111 N 4TH ST STE 101 | P.O. BOX 40710
LAFAYETTE, LA 70507 | www.arkor.com



MORRIS RENTALS

419 VINE STREET
WEST LAFAYETTE, INDIANA
(765) 743 4597

SEAL
PRELIMINARY PLANS
NOT FOR CONSTRUCTION

COPYRIGHT: All drawings are the property of Morris Rentals, Inc. and are not to be reproduced without the written consent of Morris Rentals, Inc. This drawing is for informational purposes only and is not a contract. The owner is responsible for obtaining all necessary permits and approvals from the local authorities.

MORRIS RENTALS
REMODEL & ADDITION
443 Vine Street
West Lafayette, Indiana 47906

PROJECT

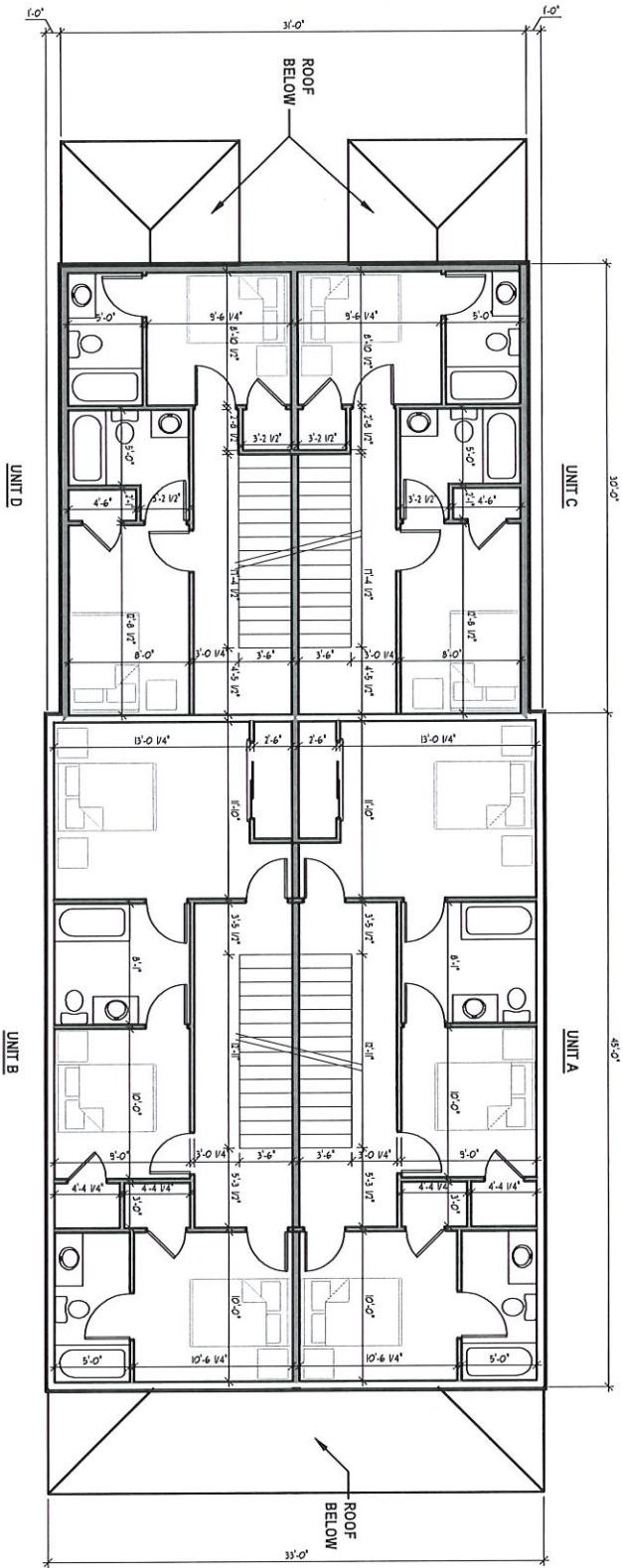
DRAWN BY: GAZ CHPTD BY: RCJ

PLOT DATE: March 1, 2019

PROJ. NO.: C-18041

SHEET NAME:
**PROPOSED
ARCHITECTURAL
SITE PLAN**



SHEET NUMBER:
A3



PRELIMINARY SECOND FLOOR PLAN

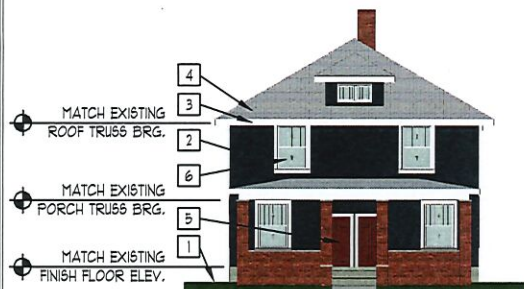
SCALE: 1/8" = 1'-0" (11"x17" SHEET)



 ARKOR	 MORRIS RENTALS 419 ONE STREET WEST LAFAYETTE, INDIANA 47906 (765) 744-6597	PRELIMINARY PLANS NOT FOR CONSTRUCTION		PROJECT: MORRIS RENTALS 419 ONE STREET WEST LAFAYETTE, INDIANA 47906
		SHEET NAME: PROPOSED SECOND FLOOR PLAN SHEET NUMBER: A5		DRAWING BY: DAZ CHECKED BY: RSL PROJECT DATE: March 1, 2019 REVISION: C-18041
		443 Vine Street West Lafayette, Indiana 47906		MORRIS RENTALS REMODEL & ADDITION
		33'-0"		30'-0"

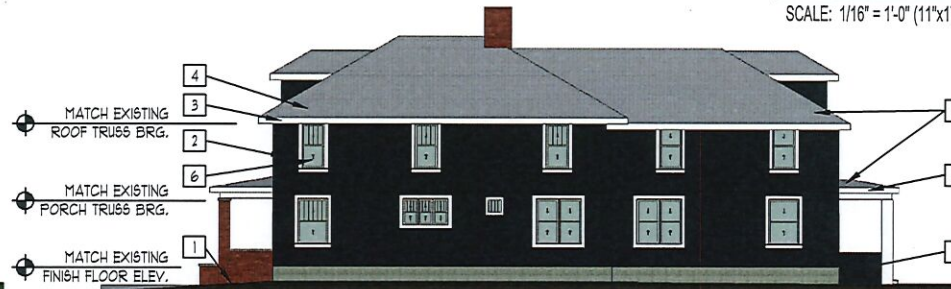
ELEVATION KEY

- | | |
|---|--|
| 1 APPROXIMATE GRADE | 4 ARCHITECTURAL ROOFING SHINGLES - GAF - TIMBERLINE HD - BIRCHWOOD |
| 2 LAP SIDING - LP BUILDING SOLUTIONS - PAINTED SW 1615 (SEA SERPENT) | 5 JELD WEN EXTERIOR DOOR - PAINTED SW 1593 (RUSTIC RED) |
| 3 TRIM & FASCIA - LP BUILDING SOLUTIONS - PAINTED SW 1006 (EXTRA WHITE) | 6 JELD WEN PREMIUM CLAD SINGLE HUNG WINDOWS - PAINTED WHITE |



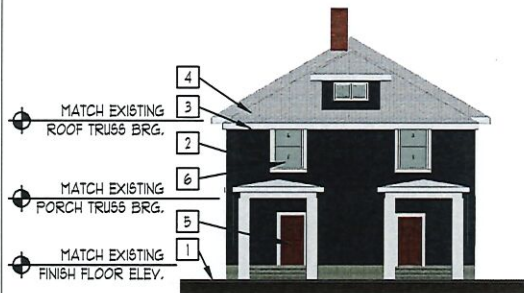
PRELIMINARY FRONT ELEVATION

SCALE: 1/16" = 1'-0" (11"x17" SHEET)



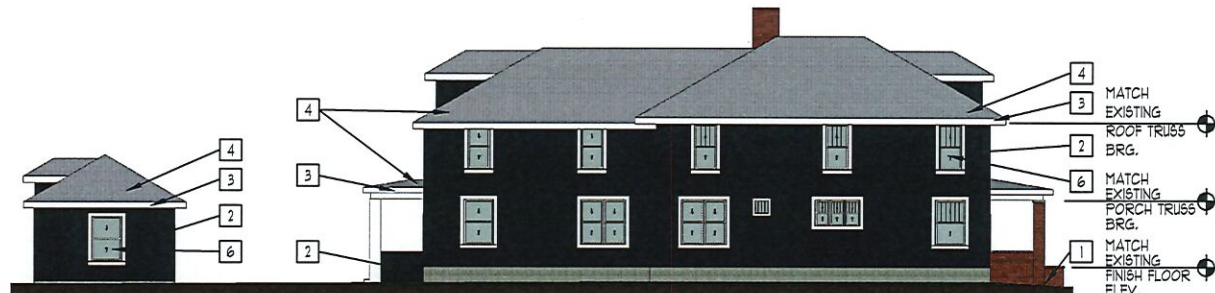
PRELIMINARY LEFT ELEVATION

SCALE: 1/16" = 1'-0" (11"x17" SHEET)



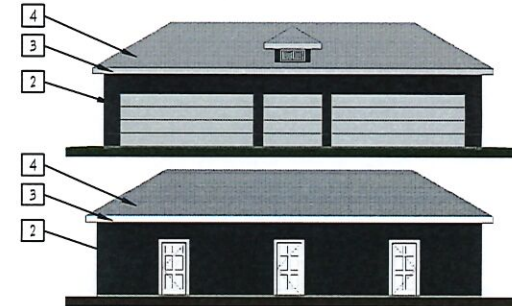
PRELIMINARY REAR ELEVATION

SCALE: 1/16" = 1'-0" (11"x17" SHEET)



PRELIMINARY RIGHT ELEVATION

SCALE: 1/16" = 1'-0" (11"x17" SHEET)



GARAGE ELEVATIONS

SCALE: 1/16" = 1'-0" (11"x17" SHEET)



117 N. 4TH ST. STE. 100
LAFAYETTE, IN 47901

1-800-427-4378
www.arkor.com



MORRIS RENTALS
419 VINE STREET
WEST LAFAYETTE, INDIANA
(765) 743 4597

SEAL:
PRELIMINARY PLANS
NOT FOR CONSTRUCTION

EXPLANATION: ANY CHANGES TO THESE PLANS MUST BE APPROVED BY THE ARCHITECT. ANY CHANGES TO THESE PLANS MUST BE APPROVED BY THE ARCHITECT. ANY CHANGES TO THESE PLANS MUST BE APPROVED BY THE ARCHITECT.

MORRIS RENTALS
REMODEL & ADDITION

443 Vine Street
West Lafayette, Indiana 47906

PROJECT

DRAWN BY: CAZ CHD BY: RCI

PLOT DATE: March 1, 2019

PROJ. NO.: C-18041

SHEET NAME:

PROPOSED

EXTERIOR

ELEVATIONS

SHEET NUMBER:

A6